



**Burns
Beach**
PRIMARY SCHOOL

**Kindergarten Parent
Handbook 2024**

Contents

Welcome to Kindy!.....	3
Curriculum.....	3
The Early Years Learning Framework for Australia- Belonging, Being, Becoming.....	3
Kindergarten Curriculum Guidelines.....	3
Early Childhood at Burns Beach PS	4
Daily timetable-Kindy Day Structure.....	4
What to expect on the First Day	5
Kindy Readiness	5
Student interests and child agency.....	5
Parent help.....	5
Delivering and Picking up children.....	6
Duty of Care-Before and After School	6
Absentees.....	6
Being Prepared - Daily Requirements.....	6
Sun Smart.....	7
Illness and infection	7
Medications	7
Immunisation History Statement.....	8
Communication.....	8
The Parents and Citizens Association (P&C)	8
Contributions and Charges	8
Birthdays	9
Sandy Toes Café	9
Personal Items/Toys.....	9
Outside School Hours Care (OSHC).....	9

Welcome to Kindy!

We are so pleased to welcome you to the Burns Beach Primary School community. We highly value our parents as partners in their child's education and are keen to work with you to develop strong and positive partnerships. We know that you are your child's first teacher and a huge amount of learning to this point is all due to you. We aim to build on, and nurture, this love of learning to support your child to become a lifelong learner and a valued and responsible community member.

Curriculum

The Early Years Learning Framework for Australia- Belonging, Being, Becoming

Our Kindergarten program will cover all learning domains within the Early Years Learning Framework. The EYLF has a strong emphasis on play-based learning as it provides the most suitable and appropriate stimulus for brain development. The framework also recognises the importance of communication and language (literacy and numeracy) as well as social and emotional development.

Fundamental to the framework is a view of children's lives as characterised by **belonging, being and becoming**.

Experiencing **belonging** - knowing where and with whom you belong - is integral to human existence. **Belonging** acknowledges children's interdependence with others and the basis of relationships in defining identities. **Belonging** is central to **being** and **becoming** in that it shapes who children are and who they become.

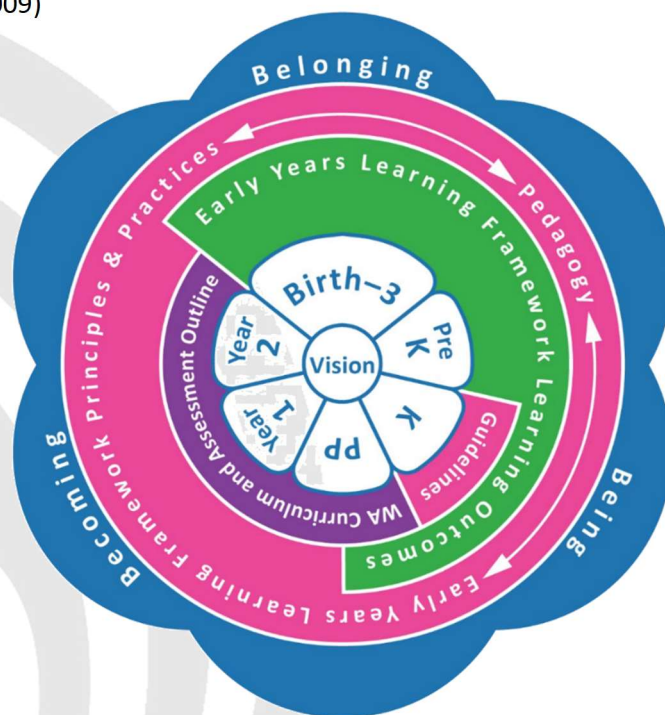
Childhood is a time to be, to seek and make meaning of the world. **Being** recognises the significance of the here and now in children's lives.

Children's identities, knowledge, understandings, capacities, skills and relationships change during childhood. **Becoming** affects this process of rapid and significant change that occurs in the early years as young children learn and grow.

(The Early Years Learning Framework for Australia, 2009)

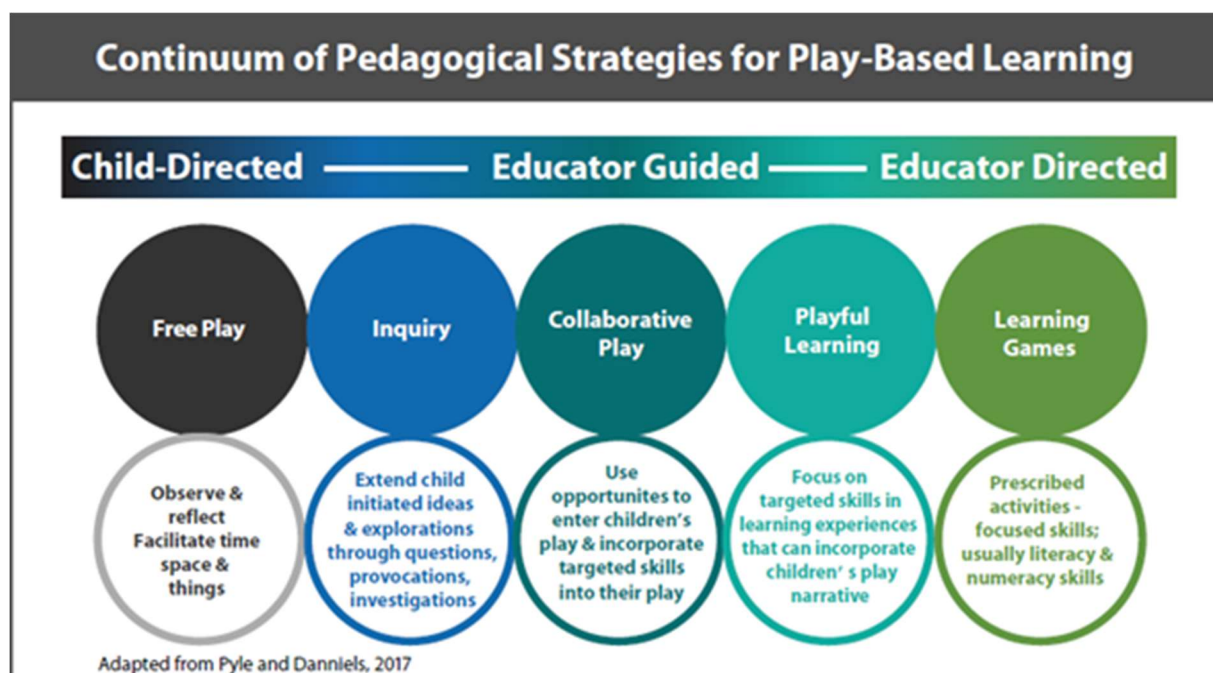
Kindergarten Curriculum Guidelines

The Kindergarten Curriculum Guidelines guide our educators to develop kindergarten curriculum for Western Australian children. It draws from the key ideas and related content from the EYLF to construct curriculum to ensure that all children in Kindergarten experience quality teaching and learning.



Early Childhood at Burns Beach PS

Our teaching and learning programs involve a balanced approach between play based learning and explicit instruction.



Play is important as it is our students' version of 'work'. Playing helps young children's brains to develop and for their language and communication skills to mature. Play supports your child's physical, cognitive, literacy and numeracy and social and emotional development.

Typical daily timetable-Kindy day structure

8:15	Classroom doors open and table activities for children to complete with parents
8:30	Literacy Mat Session Crunch and Sip Investigation Time Literacy Stations- differentiated/needs-based instruction with teacher/EA.
10:30	Recess
10:50	FMS- Obstacle Course
11:00	Maths Mat Session Maths Stations - differentiated/needs-based instruction with teacher/EA. Games and Investigation Time.
12:20	Talk for Writing
12.50	Lunch - eating
1:00	Lunch play
1:30	Mindfulness
1:40	Integrated Learning (HASS / Health)
2:40	Home Time

What to expect on the first day

On arrival, the students will place their bags on the rack provided outside the classroom. They put their water bottle on the shelf provided and place their lunchbox in their labelled pigeon hole (water bottles and lunch boxes are taken home at the end of each day and brought back the next day). Your child will then be provided with a name badge.

This may be the first time that your child will be separated from their family and loved ones. This is called 'separation anxiety' and is often displayed by three and four-year-olds. Sometimes this initial separation can be difficult (even if your child has done this before). You are always welcome to stay with your child and complete an activity with them until the musical siren plays. This is a special time for you and your child to spend together and helps your child feel settled.

If your child does suffer from some separation anxiety, the best way to handle it is to remain positive and encouraging and to alert our staff that your child will need some support. You can then kiss them and give them a hug goodbye, once, and smile and say "goodbye, have a great day", and leave swiftly. In most cases, your child will settle quickly. If they don't, please know that we will call and let you know. If we don't call you, that means your child has settled quickly however, you are also welcome to call and check in if you would like.

Kindy readiness

As children begin their first year of school, they are eager to become independent. Allowing your child to become independent increases their self-confidence. Here are some ways you can help:

- Encourage your child to put things away after use
- Allow your child to unpack their bag and put their items in their correct places on their own
- Let your child carry their own school bag
- Practice tying shoelaces or undoing velcro straps, putting on shoes and socks, on their own
- Practice opening and eating from a lunch box and using a school bag
- Enjoy reading with your child

Student interests and child agency

During play-based learning, children have opportunities to share their interests and understanding with the teacher. Teachers then create play provocations to encourage children's learning. Children can then share their learning and understanding in multiple ways.

Parent help

Parent participation in the Kindergarten program is highly valued, and students love having their parents on roster. Teachers will be asking for parent helpers throughout the year. Parents will need to sign in and out of the school office so please keep a lookout for communications about when and how to help. The type of help may vary e.g. reading to students, helping with learning activities, donating resources, helping with outdoor play etc.

Delivering and picking up children

Our doors open at 8.15am. There will be a range of activities for students to complete with parents. The musical siren will play at 8.30am, signalling the start of the day.

The day concludes at 2.40pm. It is important that parents are on time to pick up their child as they can get distressed if you're not there.

The Kindergarten staff can only release your child to parents/guardians named on the enrolment form, unless another person is delegated this responsibility in writing. Please inform one of the Kindy staff members that this will be the case and provide permission in the class diary located in the Kindy room.

In an **emergency**, please telephone the school before your child is due to be collected, where possible. The person picking up your child will need to present identification.

If you require your child to **leave early**, you will need to sign them out through the front office.

If you **arrive late**, please sign your child in through the front office before taking them to their classroom.

Duty of care-before and after school

Parents/carers have duty of care for their children before and after school. At our school, students are to arrive from 8.15am onwards, when the classroom doors are open. After school, it is expected that students go home straight away, unless they are under the supervision of their parents/carers. If students remain on school grounds with their parents, direct supervision by parents is expected.

Absentees

If your child is absent, please let the school know as soon as possible. This can be done via the Compass App (coming soon), calling the school on 9233 6850 or an email to their class teacher.

Being prepared - daily requirements

For each Kindy session, students will require:

- **A school bag** - this is essential and needs to be large enough to accommodate the daily requirements as well as to bring home notes and any large creations. Following our protective behaviours guidelines, it is important that your child's name is NOT written on the outside of the bag - please either write it on the underside of a strap or on the inside of the bag. Help your child to recognise their bag by having a special keyring or the like attached to the zip or pocket.
- **Uniforms** - all Kindy students are expected to wear our school uniform in line with the Burns Beach Primary School Dress Code. If your child cannot tie their own shoelaces, it could be wise to send them with shoes with velcro straps. Tying shoelaces is a great skill to practice in the lead up to Kindy.

- **Spare clothes** – please include a full set of clothes (including socks), in a labelled plastic bag, in your child’s bag. This is in case of accidents or times when water is involved in the learning experience. Please label all items.
- **Crunch and Sip** - we have Crunch and Sip every day. One piece of fruit or vegetable cut into small bite sized pieces is perfect. Could you please put your child’s Crunch and Sip in its own labelled container and place it on the tray provided in the classroom. Please remember that Crunch and Sip is fruits, vegetables and water only (see attached flyer for ideas).
- **Morning tea/recess** – this can be packed in your child’s lunch box. Many children have one or two small snacks, such as a yoghurt and some cut fruit or veggies.
- **Packed lunch** - please make sure that your child’s lunch is packed in an easily accessible container or wrap. We will send home any uneaten elements of your child’s lunch so that you are aware of what they are eating (or not eating) each day.
- **Drink bottle** - with water only
- **We are a ‘nut and allergy aware’ school** so we ask that nuts and products containing nuts are not brought to Kindy. Foods to avoid include Nutella, peanut butter and muesli bars. Please check food labels on all snacks where possible. We will let the parent group know if there are other items that a student in their child’s class is allergic to.

Sun Smart

We are a Sun Smart school and require our students to wear a hat whenever they are outside, all year round. If students don’t have a hat, they will be asked to play in the shade. All our students will receive a school bucket hat as a welcome gift. It is also a good idea for parents to apply sunscreen on their child before school each day. During terms 1 and 4 students will be assisted in reapplying sunscreen before playing at lunchtime

Illness and infection

We ask that you keep your child at home if they are unwell. If an infectious or contagious illness is diagnosed, including head lice, please advise the class teacher who can respond accordingly. If your child is absent, please notify the school as soon as possible. This can be done via the Compass App (coming soon), calling the school on 9233 6850 or an email to the class teacher.

Medications

Administration of medication that requires documentation to be completed. Please contact the school office for a copy of the Administration of Medication form. If your child needs to take medication at school (including antibiotics) please ensure the medication is clearly labelled, not out of date, and in original packaging to enable correct administration procedures. The medication and the completed form are to be brought to the front office at the start of the day to be stored in the Medical Room.

Do not leave medication in school bags.

Please ensure that you have informed the school of any medical conditions that your child has and that an action plan has been provided.

Immunisation History Statement

Kindergarten children must be **up to date** with all scheduled immunisations for their age to be able to enrol. To enrol in Kindergarten, a child must have one of the following documents:

- An Australian Immunisation Register (AIR) Immunisation History Statement that is **up to date** and not more than two months old
- An AIR Immunisation History Form that shows a catch-up schedule and is no more than six months old.
- A valid immunisation certificate issued by the Chief Health Officer

Communication

We highly value ongoing communication between home and school about your child. As their parent/caregiver, you know your child best and we appreciate all information you have regarding your child's interests, likes/dislikes and needs. Making brief contact with one of the staff at arrival or pick-up time is great. If you have specific matters to discuss or share, please make an appointment with your child's teacher. It is also important to keep us up to date with your address, home and work contact details. If these change, please let the front office know. Please inform the class teacher and the front office of any custody or access arrangements concerning your child. This includes providing any relevant court papers.

All Kindergarten students will receive a formal report at the end of Term 2 and Term 4. This report will reflect the level of your child's skills, knowledge and understanding in relation to the Kindergarten curriculum. Early identification of students who require extra learning support is a critical part of our Kindergarten program. We know that early intervention provided by the school and families can support students to overcome any identified learning difficulties.

We will keep you informed of school events through the Compass App, the school newsletter, notes home to parents and the noticeboard located outside the classroom.

The Parents and Citizens Association (P&C)

The Burns Beach Primary School P&C meet regularly each term and warmly welcome all parents as members. Please keep an eye on our Compass App, website and newsletter for information regarding meeting days and any events.

Contributions and Charges

A school voluntary contribution of \$60 per child and a P&C voluntary contribution of \$50 per family are requested. These contributions may be made through the front office or via the Personal Items list. Payments made through the front office can be accepted via cash, credit card/EFTPOS or cheque. Please make cheques payable to Burns Beach Primary School. Please see the 2024 Voluntary Contributions and Charges letter on the school website.

Birthdays

We love sharing and celebrating your child's birthday with them. A birthday is special to you and your child and, therefore, it is special to us too! We are happy for you to share a birthday treat near, or on, their special day. As we are a 'nut and allergy aware' school, please do not send birthday treats that may contain traces of nuts. Please also check with the Kindy staff if any children have allergies (eg dairy, eggs etc). You can also purchase cupcakes from the Sandy Toes Café for your child's special day.

Sandy Toes Café

Our school has a canteen service that is provided from The Sandy Toes Café 4 days per week (Tuesday to Friday) by our Café Manager Clare Gallagher. Parents and students can place lunch orders before school via the Quick Cliq website or app. The Café also sells yummy barista style coffee onsite for parents and staff. These can be purchased before school and throughout the day.

Kindy students can place recess and lunch orders but are not able to purchase directly from the counter during playtime. Our Café follows the Healthy Eating Policy to ensure our students have food that is both delicious and healthy.

Keep an eye out for the Term 1 Menu.

Personal Items/Toys

A Personal Items List is available via the school website. These items are shared in your child's classroom for communal use throughout the school year. There is no need to label each item, please just label the bag/box.

We ask that your child does not bring any personal items or toys to Kindergarten. The loss or damage of special items can bring tears and heartache. We can't be responsible for the loss or damage of personal items.

Outside School Hours Care (OSHC)

We have partnered with Camp Australia to deliver an Outside School Hours Care service on our school grounds for both before and after school, and for Vacation Care. Camp Australia Burns Beach is open before school from 6.30am and after school until 6.00pm, Monday to Friday. Further information is available via their website <https://campaustralia.com.au/>